





Judo (Sanshiro Murao, School of Physical Education)



Para Swimming (Junya Hamamoto, School of Health Studies)

## Contents

Greetings	3
Tokai University in Numbers	5
Academic Programs	7
Global Partners	9
Global Education	11
Research	13
Engagement	15
Nursery School to University	17
Institutions	19
The Founding Spirit	21
The Tokai Centenary Plan	25
History	27
Quick Facts	29

# Greetings



Tatsuro Matsumae  
President

## Drawing on the TES founding spirit and the history since its founding to carve out a future as a challenge-orientated organization

In 1942, our founder, Shigeyoshi Matsumae, established the Tokai University Educational System (TES) in Shimizu, Shizuoka Prefecture. His actions

were fueled by a burning ideal to nurture the development of people who could be entrusted with building a future in order to achieve happiness and harmony for human society. TES has since overcome many difficulties thanks to the solid bonds that we have built, and through the support of like-minded people and partners who share in our belief that “The fundamentals of building a solid nation lie in education. We must build

Japan as a peaceful nation with education as its foundation.” Today, TES is a comprehensive educational system with many teaching and research institutions and affiliated facilities inside and outside of Japan.

The world is at a major turning point. In order to conquer the distortions and conflicts facing modern civilized society, we should recognize diversity and create paths of coexistence while building new and more harmonious relationships between people, society, and nature. Our mission is to help forge those

relationships and to send young people out into the world who can clear a sure and safe path towards this new era.

We will continue to be pioneers of change, and are committed to contributing to the building of a harmonious and civilized society, all the while adhering to what cannot and shouldn't be changed: our founding spirit and the educational system that nurtures the power of thought.



Yoshiaki Matsumae  
Chairperson, Board of Trustees  
Vice President

## Realizing genuine human education based on a harmonious balance between the arts and science through our consistent education system holding a “compass” that guides our future voyage toward the centenary

In commemoration of a key moment in the University's history, its 75th anniversary, Tokai University Educational System (TES) developed an overall strategy called the Tokai Centenary Plan in 2017. With the history and tradition built on our founding spirit at its core, the plan is designed to uphold TES's collaborative system through the sharing of our sense of values and goals, aligned with the action guidelines. In short, the Tokai

Centenary Plan will act as a compass, guiding us on the voyage towards our centenary in 2042.

The world is constantly evolving. As we contemplate the next quarter of a century, we realize that we are facing immense changes. Rather than viewing these as a threat, we view them as opportunities for adaption and growth. Led by the Tokai Centenary Plan, we will continue unwaveringly on our path to reform, constantly challenging ourselves and striving to pave the way for our future.

With the history and tradition of TES firmly in our hearts, with its consistent education system as its foundation, and based on our founding ideals of achieving a harmonious balance between the arts and sciences, we strive to provide a genuine human education that is trusted by society.



Kiyoshi Yamada  
Chancellor

## Being a pioneer -Think Ahead, Act for Humanity- Educating world-class persons devoted to “Improving QOL”

From the time of its founding, Tokai University has been committed to upholding its educational mission of integrating the liberal arts and sciences. Concretely, we promote global interactions through cultural, academic

and sporting endeavors. Through our rich curriculum, we aim to produce graduates who enter society equipped with a breadth and depth of knowledge.

“Think Ahead, Act for Humanity.” This is the message we have conceived as we strive towards our 100th anniversary. We consider “Quality of Life” to be the key to this endeavor, and a crucial component in our mission of education, research, and

cooperation both within society and internationally.

We exist to provide students with an educational environment in which ideas can be defined and nurtured. In addition, my wish is that Tokai University be a place where students, faculty and staff can grow as human beings as they work towards realizing their dreams.

Global issues, including the new coronavirus outbreak, require us to think from a global perspective. I believe it is our responsibility to work between and beyond borders, and

cooperate with people throughout the world to find solutions to the shared issues of our time.

# Tokai University in Numbers



**30,000**  
Students

**1,130**  
International  
Students

**4**  
Hospitals

**18:1**  
Student-faculty  
Ratio

**7**  
Campuses

**78**  
Year  
History

**75**  
Majors

**99%**  
Employment  
Rate

**37**  
Olympic  
Medals



Second Place in the 2019 Bridgestone World Solar Challenge

# Academic Programs

## Undergraduate Schools

### SHONAN CAMPUS

360°



- Letters**
  - Civilization
  - History
    - Japanese History
    - Occidental History
    - Archaeology
  - Japanese Literature
  - English
- Cultural and Social Studies**
  - Asian Studies
  - European and American Studies
  - Nordic Studies
  - Creative Writing
  - Media Studies
  - Psychological and Sociological Studies
- Political Science and Economics**
  - Political Science
  - Economics
  - Business Administration
- Law**
  - Law
- Humanities and Culture**
  - Human Development
    - Environment and Resources
    - Human Welfare Environment
  - Arts
    - Music
    - Fine Arts
    - Design
  - International Studies

- Physical Education**
  - Physical Education
  - Competitive Sports
  - Judo and Kendo
  - Physical Recreation
  - Sport & Leisure Management

- Health Studies**
  - Health Management

- Science**
  - Mathematics
  - Mathematical Sciences
  - Physics
  - Chemistry

- Information Science and Technology**
  - Human and Information Science
  - Applied Computer Engineering

- Engineering**
  - Applied Biochemistry
  - Applied Chemistry
  - Optical and Imaging Science and Technology
  - Nuclear Engineering
  - Electrical and Electronic Engineering
  - Materials Science
  - Architecture and Building Engineering
  - Civil Engineering
  - Precision Engineering
  - Mechanical Engineering
  - Prime Mover Engineering
  - Aeronautics and Astronautics
    - Aerospace
    - Aviation
  - Biomedical Engineering

- Japanese Language Course for International Students**
  - (Non-degree course)

### YOYOGI CAMPUS

- Tourism**
  - Tourism (1st year : Shonan Campus)

### TAKANAWA CAMPUS

360°



- Information and Telecommunication Engineering**
  - Information Media Technology
  - Embedded Technology
  - Management Systems Engineering
  - Communication and Network Engineering

### SHIMIZU CAMPUS

360°



- Marine Science and Technology**
  - Maritime Civilizations
  - Environmental and Societal Affairs
  - Marine and Earth Science
  - Fisheries
    - Applied Biological Science
    - Food Science
  - Marine Biology
  - Navigation and Ocean Engineering
    - Navigation
    - Ocean Engineering

- Course of Shipboard Training**
  - (Non-degree course)

### ISEHARA CAMPUS

360°



- Medicine**
  - Medicine
  - Nursing

### KUMAMOTO CAMPUS

360°



- Business Administration**
  - Business Administration
  - Tourism Management

- Industrial and Welfare Engineering**
  - Electrical Engineering and Computer Science
  - Medical Care and Welfare Engineering

- Agriculture**
  - Plant Science
  - Animal Science
  - Bioscience

### SAPPORO CAMPUS

360°



- International Cultural Relations**
  - Community Development
  - International Communications
  - Design and Culture

- Biological Sciences**
  - Biology
  - Marine Biology and Sciences

## Graduate Schools

- Science and Technology
- Earth and Environmental Science
- Bioscience
- Letters
- Political Science
- Economics
- Law
- Human Environmental Studies
- Arts
- Physical Education
- Science
- Engineering
- Information and Telecommunication Engineering
- Oceanography
- Medicine
- Health Sciences
- Industrial Engineering (No longer accepting applications)
- Agriculture
- Biology




# Global Partners

## Asia

-  **Cambodia**  
Institute of Technology of Cambodia
-  **China**  
Beijing University  
China Association for International Friendly Contact  
East China Normal University  
Fudan University  
Renmin University of China  
State Key Laboratory of Remote Sensing Science  
Sun Yat-Sen University
-  **India**  
SASTRA University  
SRM University
-  **Indonesia**  
Bandung Institute of Technology  
Bogor Agricultural University  
Universitas Gadjah Mada  
Universitas Padjadjaran
-  **Laos**  
National University of Laos
-  **Malaysia**  
Malaysia-Japan International Institute of Technology  
Multimedia University  
Universiti Teknologi Malaysia  
University Malaysia Sarawak
-  **Mongolia**  
Shine Mongol High School

-  **Philippines**  
University of the Philippines
-  **Republic of Korea**  
Ajou University  
Cheongju University  
Dong-eui University  
Hallym University  
Hanyang University  
Kookmin University  
Masan University  
Sangmyung University  
Silla University
-  **Taiwan**  
National Central University  
National Applied Research Laboratories  
Tamkang University  
Tunghai University
-  **Thailand**  
Chulalongkorn University  
Khon Kaen University  
King Mongkut's Institute of Technology, Ladkrabang  
King Mongkut's University of Technology, Thonburi  
Maejo University  
Ministry of Education  
Ministry of Public Health  
Siam University  
Thai-Nichi Institute of Technology
-  **Vietnam**  
Hanoi University of Technology  
Ministry of Education and Training  
Vietnam National University - Ho Chi Minh City

## Oceania

-  **Australia**  
Australian Internships  
The University of Newcastle  
The University of Queensland  
The University of Western Australia

-  **New Zealand**  
University of Auckland  
University of Waikato

## North America

-  **Canada**  
University of British Columbia  
University of Manitoba  
University of Ottawa
-  **U.S.A.**  
Case Western Reserve University  
Hawaii Tokai International College  
Kuakini Health System  
New York Medical College  
San Diego State University  
Syracuse University  
The Washington Center  
Tufts University  
University of Alaska Fairbanks  
University of California, Riverside  
University of Hawai'i System  
- University of Hawai'i at Mānoa  
- University of Hawai'i – West O'ahu  
University of Miami  
University of North Dakota  
Wake Forest University

## Latin America and the Caribbean

-  **Brazil**  
Federal University of Mato Grosso
-  **Mexico**  
El Colegio de Michoacan
-  **Peru**  
National University of San Marcos


## Europe

-  **Austria**  
International Atomic Energy Agency (IAEA)  
University of Vienna
-  **Bulgaria**  
Bulgarian Academy of Sciences  
Ministry of Education and Science  
Technical University of Sofia
-  **Denmark**  
Copenhagen Business School  
Danish Maritime University  
Danmarks Designskole  
Deaconess University College  
Idratshojkolen Bosei  
Technical University of Denmark  
University College Absalon  
University of Copenhagen  
VIA University College
-  **Finland**  
University of Lapland  
University of Turku
-  **France**  
Aix-Marseille University  
L'Univaersite de Bourgogne  
University of New Caledonia
-  **Germany**  
Esslingen University of Applied Sciences  
Humboldt University of Berlin  
University of Kassel
-  **Hungary**  
Budapest University of Technology and Economics  
Simmelweis University
-  **Iceland**  
University of Iceland
-  **Italy**  
University Ca' Foscari of Venice
-  **Kazakhstan**  
Joint-stock Company  
"Center for International Programs"  
L.N. Gumilyov Eurasian National University  
Satbayev University
-  **Norway**  
Norwegian Institute of International Affairs  
University of Bergen  
University of Oslo
-  **Russia**  
Educational Center JSC Gazprom  
Far Eastern Federal University  
Far Eastern State Medical University  
Higher School of Economics  
Lomonosov Moscow State University  
Sakhalin State University
-  **Spain**  
University of Alcala  
University of Salamanca
-  **Sweden**  
Chalmers University of Technology  
Linköping University  
Stockholm University  
University of Gothenburg
-  **U.K.**  
Cardiff University  
Imperial College London  
Oxford University  
University of Essex  
University of Kent








## Middle East

-  **Saudi Arabia**  
Al-Imam Muhammad Ibn Saud Islamic University  
Effat University  
King Abdulaziz University  
MiSK Foundation
-  **Turkey**  
Yunus Emre Institute
-  **UAE**  
Khalifa University of Science and Technology (Sas Al Nakhl Campus)

## Africa

-  **Egypt**  
National Authority for Remote Sensing and Space Sciences
-  **Kenya**  
University of Nairobi

## Overseas Offices

-  **Tokai University European Center**  
Address  
Vedbaek Strandvej 476, 2950 Vedbaek, Denmark  
Phone  
+45-45-890809  
Website  
http://www.u-tokai.dk
-  **Tokai University Pacific Center**  
Address  
91-971 Farrington Highway, Kapolei, Hawaii 96707 U.S.A.  
Phone  
+1-808-983-4121
-  **Tokai University Vienna Office**  
Address  
Matsumae Budocenter, Gutheil-Schoder-Gasse 9, A-1100 Wien, Austria  
Phone  
+43-1-6650565
-  **Tokai University Seoul Office**  
Address  
Global Information Center, International Building, Hanyang University 222, Wangsimni-ro, Seongdong-gu, Seoul 04763, Korea  
Phone  
+82-2-2220-2458
-  **Tokai University ASEAN Office (Bangkok Office)**  
Address  
18/8 FICO Place 3F Room 301, Soi Sukhumvit 21, Sukhumvit Road, Klongtoey Nua, Wattana, Bangkok, 10110 Thailand  
Phone  
+66-2-661-7161
-  **Tokai University ASEAN Office (Ladkrabang Office)**  
Address  
C/O King Mongkut's Institute of Technology Ladkrabang (KMITL)  
1, Soi Chalokkrung 1, Ladkrabang, Bangkok 10520 Thailand  
Phone  
+66-2-329-8158
-  **Tokai University Russia Office (Vladivostok)**  
Address  
10 Ajax Bay, Russky Island, building A, 7F, room 703 Vladivostok, Russia

## Alumni Association Overseas Branches

- Afghanistan
- Republic of Korea
- Bulgaria
- Russia
- Denmark
- Shanghai (China)
- Hawaii (US)
- Singapore
- Hong Kong
- Taiwan
- Indonesia
- Thailand
- Malaysia
- Vietnam

As of March 2020

# Global Education



## Study Abroad

Tokai University Educational System aspires to lasting peace and engages in academic, cultural, and sports exchanges designed to foster mutual understanding among nations, regardless of political differences.



## Hawaii Tokai International College

American two-year accredited college that offers an Associate in Arts degree.



## Overseas Educational Cruise (OSEC)

OSEC is a unique educational program, which allows students to visit overseas nations on a research and training vessel, the Bosei Maru, owned and operated by Tokai University.



## Exchange Programs

Through partnerships with more than 120 universities and institutes in around 40 countries, Tokai University offers approximately 60 internship and study abroad programs.



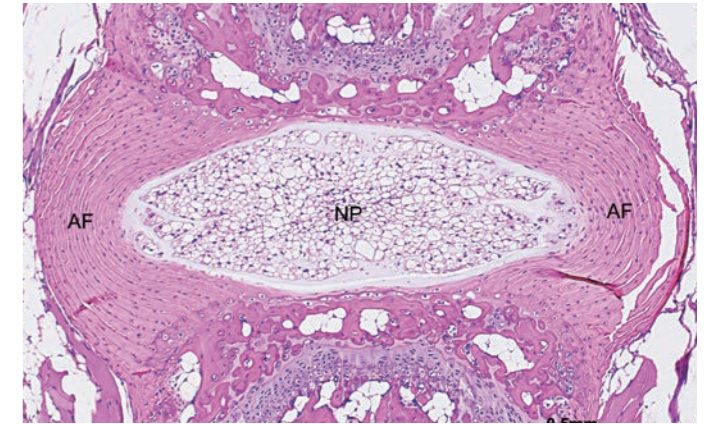
## Oceanology

- Oceanic climate research
- Study of mineral resources in Palau's mid-ocean ridge seafloor
- On-shore abalone farming using underground seawater



## IT

- Image processing for earth observation satellite
- Global environmental change analysis
- Disaster information coordination system (glocal-monitoring)



## Medicine

- Development of new anti-cancer drugs
- Cartilage regeneration treatment
- Responses to aging societies



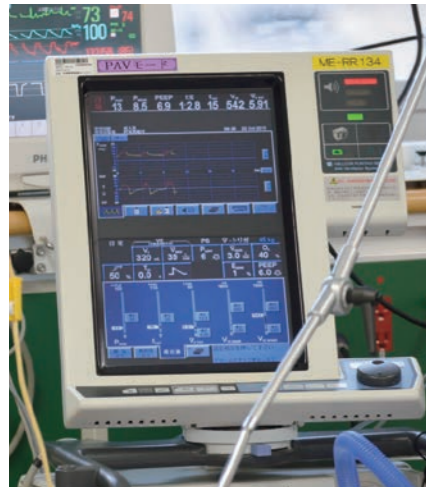
## Clean Energy

- Hydrogen energy use
- Development of solar car
- Waste-Heat Recovery Thermoacoustic System

# Engagement

## Quality of Life

Tokai University has brought to bear all of its skills as a comprehensive university in order to promote the advancement of Quality of Life (QOL). This objective is linked to fulfilling our founding mission, the “creation of a harmonious society where all can live together in peace.” We aim to bring together the various activities that contribute to society with the principle of Sustainable Development Goals (SDGs) in order to realize a “sustainable society.”



School of Medicine



School of Health Studies



Track & Field Club

## Student Project Center

As a pioneer of practical education, the center fosters students' social and practical skills through a combination of theory-based classroom lectures and hands-on project activities.



Tokai Formula Club

## Community Engagement

Leveraging the experience of various social and regional contribution activities, Tokai University combines the regional activities of each campus and undertakes joint projects to solve the problems of each region in a holistic manner.



Science Communicator

## Hospitals

Tokai University School of Medicine has four university hospitals for comprehensive medical practice combined with research, education, and treatment.



Air Ambulance

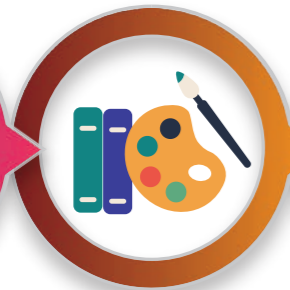


# Nursery School to University

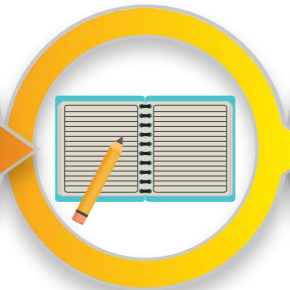
One of the features of the Tokai University Educational System is the continuation of education from nursery schools to colleges and universities. Tokai University offers educational systems in environments appropriate for each stage of development.



“Play” is at the center of education to develop the minds and bodies of young children.



Through a well-structured curriculum, children develop their individuality and potential.



Emphasis is placed on wisdom and creativity so that students learn to think and take action by themselves.



Through various activities, students develop into well rounded individuals.



Meet the challenge of learning new topics and skills to prepare for a particular field of specialization.



# Institutions

- University   ■ Junior College   ■ Senior High School   ■ Junior High School
- Elementary School   ■ Kindergarten
- Research Institute   ■ Affiliated Organizations and Facility
- TES Research Institute

## Fukuoka

- Fukuoka Senior High School
- Jiyugaoka Kindergarten [Certified Child Care Center]

## Kumamoto

- Kumamoto Campus \*1
- Aso Farm
- Kumamoto Seisho Senior High School
- Kamome Kindergarten [Certified Child Care Center]
- Research Institute of Agriculture
- Space Information Center
- Matsumae Shigeyoshi Commemoration Hall

## Osaka

- Osaka Gyosei Senior High School
- Osaka Gyosei Junior High School

## Nagano

- Suwa Senior High School

## Yamanashi

- Kofu Senior High School (Independent Establishment)
- Yamanakako Seminar House

## Yamagata

- Yamagata Senior High School (Independent Establishment)

## Gunma

- Tsumagoi Training Center

## Hokkaido

- Sapporo Campus
- Sapporo Senior High School
- International Exchange Hall
- Ginrei Mountain Villa

## Tokyo

- Yoyogi Campus
- Takanawa Campus
- Takanawadai Senior High School
- Takanawadai Junior High School
- Bosei Senior High School
- Sugao Senior High School (Independent Establishment)
- Sugao Junior High School (Independent Establishment)
- TES Bosei Gakujuku
- Research and Information Center (TRIC)
- Social Science Research Institute
- Tokyo Hospital
- Hachioji Hospital
- The Tokai University Club

## Chiba

- Urayasu Senior High School
- Urayasu Junior High School
- Ichihara Boyo Senior High School

## Kanagawa

- Shonan Campus
- Isehara Campus
- Tokai University Junior College of Nursing and Medical Technology \*2
- Sagami Senior High School
- Sagami Junior High School
- Honda Memorial Kindergarten [Certified Child Care Center]
- TES Bosei Gakujuku School Archives Center
- Institute of Innovative Science and Technology
- Institute of Civilization Research
- Institute of Medical Sciences
- Institute of Advanced Biosciences
- Center of Educational Research and Development

- Sports Medical Science Research Institute
- Research Institute of Science and Technology
- Strategic Peace and International Affairs Research Institute
- Micro/Nano Technology Center
- Nursing Research Facility (Tokai University Junior College of Nursing and Medical Technology)
- Publishing Division
- Matsumae Commemoration Hall
- Hospital
- Oiso Hospital
- Matsumae Hall
- International House

## Others

- Research and Training Vessel "BOSEI MARU"
- Okinawa Regional Research Center

## Overseas

- Hawaii Tokai International College (Independent Establishment)
- European Center
- Pacific Center
- Vienna Office
- Seoul Office
- ASEAN Office [Bangkok Office/ Ladkrabang Office]
- Russia Office (Vladivostok)

## Shizuoka

- Shimizu Campus
- Tokai University Junior College \*2
- Shizuoka Shoyo Senior High School
- Shizuoka Shoyo Junior High School
- Shizuoka Shoyo Elementary School
- Shizuoka Shoyo Kindergarten [Certified Child Care Center]
- Institute of Oceanic Research and Development
- Institute of Human Development (Tokai University Junior College)
- Marine Science Museum / Natural History Museum
- Miho Training Center

\*1 The education and research activities of the Undergraduate and Graduate School of Agriculture will be enhanced at the Kumamoto Campus and Aso Field, as well as at a new campus.  
 \*2 No longer admitting students

# The Founding Spirit

During his youth, Dr. Shigeyoshi Matsumae, founder of TES, was bewildered by the question “How should I live my life?” He found inspiration in the teachings of Kanzo Uchimura, a noted Japanese Christian scholar who held study group meetings for youth.

Dr. Matsumae also studied about Denmark and the role education played in the rebuilding of the nation. The impressions of these early lessons were the genesis of what has become the Tokai University Educational System. In time, Dr. Matsumae opened his first school, Bosei Gakujuku, which was inspired by the concept of Danish folk schools, and devoted his life to education.

This four-line slogan was written by Dr. Matsumae for the students of Bosei Gakujuku and continues to guide all of the schools at TES.

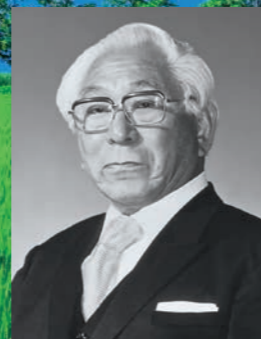
Cultivate your thoughts in your early days  
Nurture your body in your early days  
Develop your intellect in your early days  
Aim your hopes towards the stars in your early days

His message to students was simple but powerful: develop both your minds and bodies to the fullest possible extent, and in doing so, acquire great insight and understanding of yourself, of life, and all aspects of the world around you.

Dr. Matsumae’s vision continues to guide and inspire TES in its mission to provide youth with a balanced education that opens their minds and nurtures within them a humanitarian spirit, thus contributing to a more peaceful world.

## Dr. Shigeyoshi Matsumae and the founding spirit of the school

The Tokai University Educational System (TES) is a reflection of the ideals of its founder, Dr. Shigeyoshi Matsumae (1901-1991) and the manifestation of his enthusiasm for and commitment to education. As such, his “founding spirit” and ideals continue to influence and inspire the education provided at all TES campuses.



Shigeyoshi Matsumae  
Founder

### Matsumae’s early years:

Shigeyoshi Matsumae was born in Oshima Village (now Kashima-cho), Kami-Masaki Gun, Kumamoto Prefecture and moved to Kumamoto City when he was a fifth grader in elementary school. Unlike the village, the city was lit by electricity at night, and the beauty of the lights impressed young Shigeyoshi, who wondered, “How can it be lighted like this?” He later noted that it was that wonderment and curiosity that served as the impetus for his study of “electric science.”

Influenced by his older brother, young Matsumae devoted himself to sports such as judo at Kumamoto Middle School (now Kumamoto High School) and Kumamoto Technical High School (now Kumamoto University, Engineering Department). He entered the Faculty of Engineering at Tohoku Imperial University (now Tohoku University), where he immersed himself into the study of electrical engineering. Under Professor Heiichi Nukiyama, an expert in electromagnetics, he completed a graduate dissertation on the property of the vacuum tube, which later developed into the transistor and integrated circuits.

### Matsumae’s contributions to the development of Japanese technology and campaign to improve the status of engineers:

After graduating from the University, Dr. Matsumae joined the Ministry of Communications (currently the Ministry of Internal Affairs and Communications) as an engineer, expecting to work on projects of national importance. Instead, he found the work at the Ministry was dull and dominated by bureaucratic prudence. The Ministry put priority on placing law school graduates in the top positions, and a large gap existed between the staff possessing liberal arts degrees versus those with technical and engineering backgrounds.

Concerned with this state of affairs, Dr. Matsumae pointed out that the two groups needed to develop a mutual understanding and that their combined efforts were essential for the development of the nation. He started a campaign to encourage technical engineers, who were apt to be uninterested in world and community affairs, to develop a new consciousness that would enhance their professionalism and improve their status. During that period, Japan’s science and technology industry was highly dependent on that of foreign countries. Dr. Matsumae, recognizing that the situation was unacceptable, advocated the importance of developing technological self-reliance and engaged in studies to achieve that end.

### The dawn of the information age - Matsumae’s invention of the non-loaded cable carrier communication system:

Sending more data more quickly over greater distances was the challenge that the telecommunications industry faced in the early 20th century. The leading method used at that time was the loaded cable system developed by Professor Pupin at Columbia University in the U.S., which was inefficient, had poor sound quality, and allowed only one call at a time on the circuit.

Using the results of studies done with Noboru Shinohara and others, Dr. Matsumae demonstrated original thinking by developing a new telecommunication system without a loaded coil. Sound was transmitted with a high frequency electric current, with amplifiers set in the middle of long distance cables. This method conquered the shortcomings of the loaded-cable system, making multiple, simultaneous and clear communications possible on a single line. Dr. Matsumae’s non-loaded cable carrier communication system was an enormous breakthrough in communications technology.

Governmental and private organizations joined in a domestic research project focusing on Dr. Matsumae’s invention. As a result, in 1939 the 2,700 kilometers between Japan and China were linked by the non-loaded carrier communication system, the first step in instituting the system as the main communication technique for the rest of the world. More significantly, the invention was one of the catalysts for the development of today’s information age.



Dr. Matsumae (center) visited Askov Folk High School in Denmark (1934).

### Non-loaded cable

Ushering in a new global telecommunications standard, non-loaded cable was an important development that helped pave the way to the modern information society. With this triumph, Dr. Matsumae also demonstrated Japan’s ability to develop new technology domestically.



**Matsumae's determination to engage in education - the influence of Kanzo Uchimura and N.F.S. Grundtvig's Danish folk high schools:**

As Dr. Matsumae engaged in technology development as a Ministry of Communications staff member, he pondered the larger question, "How should I lead my life?" To help find answers to that question he attended lecture meetings by Kanzo Uchimura (1861-1930), a pioneer Christian thinker in Japan, and soon began attending Bible Study Group meetings. Dr. Matsumae was intrigued by Uchimura's independent or "non-church" Christianity and by his books such as "The Story of Denmark" and "The Greatest Legacy," which greatly influenced Japanese youth of the time.

Deeply impressed by Uchimura's ideals and his passionate concern for the welfare of humanity, Dr. Matsumae learned from him the history of Denmark's reconstruction through education after losing to Prussia. In the Folkehøjskole system (folk high school or national university) advocated by N.F.S. Grundtvig (1783-1872), the spiritual leader of the new movement in Denmark, Dr. Matsumae found an exciting educational model.

The national high schools, sometimes called "universities for the people," were dynamic learning communities where students and teachers lived together and engaged freely in discussions about society, philosophy and other subjects. In 1934, Dr. Matsumae visited Denmark to personally observe and experience the Folk High Schools. He came to believe that schools should "help students understand historical perspective and views of life, and develop a sense of mission so that each student can become a more complete person." He recognized that such an educational system resulted in the creation of the driving force that had built up the dairy farming nation of Denmark. Dr. Matsumae's experiences in Denmark led him to believe that "the fundamentals of building a solid nation lie in education. We must build Japan as a peaceful nation with education as a foundation."

**Matsumae's first school - Bosei Gakujuku, the roots of TES:**

Dr. Matsumae, together with his wife, Nobuko, and close friends like Noboru Shinohara and Shintaro Okubo, established the Education Study Group which met regularly and studied the life and ideas of Dr. Albert Schweitzer and J.H. Pestalozzi, among others. Upon being awarded the 1935 Asano Prize from the Institute of Electrical Engineers of Japan, he used the prize money to help finance his educational project and in 1936, opened the Bosei Gakujuku in Musashino, Tokyo. Using the education at Denmark's folk high schools as a model, the Bosei Gakujuku encouraged physical fitness as a key element of life,

and stressed discussion of ideas and thought as a way to cultivate deeper learning about subjects. The Bosei Gakujuku as a place of learning was full of vitality, with the study of the Bible and the discussion of the future of Japan and the world as the focus of everyone's attention. It was a small educational organization but it had huge ideals. It provided the foundation for the Tokai University Educational System (TES) as it is known today.

**Matsumae, a consistent believer in world peace - dispatched to the war front as a second-class private in the Japanese Army:**

At the start of World War II, Dr. Matsumae, after assessing Japan's war capacity, advocated an early end to the war. As Director-General of Engineering in the Ministry of Communications, Dr. Matsumae held the highest position in communications in Japan at that time. However, his views soon caused him to be conscripted and sent to the South Asian front at the age of 42. As a result, the activities of the Bosei Gakujuku were suspended. After nearly losing his life, Dr. Matsumae returned from the front and was appointed as top officer of the Technology Authority of the government of Japan. The day after the bombing of Hiroshima, he headed an inspection team to the site and reported on the effects of the atomic bombing of the city.

Immediately after Japan's surrender, Dr. Matsumae became president of the Communications Authority and diligently led the reconstruction of the Japanese communications sector. With the Aerial Science College as its antecedent, Dr. Matsumae opened Tokai University to promote mutual understanding and harmony between students of the liberal arts and scientific fields. His university was admitted as Tokai University under the old prewar system in 1946 and later administered under the new postwar system in 1950.



Dr. Matsumae (second from left, front row) with students of the Bosei Gakujuku



Call-up notice (1944)

**Matsumae sets advanced technology as a national goal:**

Concerned with Japan's weak policy regarding science and technology, Dr. Matsumae advocated the improvement of the status of engineers and for a greater national focus on domestic technological developments. One result of his efforts was the prewar development of the non-loaded cable carrier. Another was the postwar establishment of the Science and Technology Agency as a department of the Japanese government. Dr. Matsumae reasoned that with few natural resources, Japan's future contributions to the world would be as a scientific and technological nation. Moreover, his experiences in Hiroshima reinforced his thoughts that technology should exist for the welfare of the people. Technology had grown to have the power to contribute to the destruction of humanity.

Dr. Matsumae, who had experienced first-hand that both the future of the nation and the future of humankind can be greatly influenced by the thoughts of all those involved, established an "educational system that nurtures the power of thought and promotes understanding between those students who pursue liberal arts and those who pursue science." "He put this ideal, something he had been striving to reach for quite some time, into practice through Tokai University.



The main building of Tokai University under the old prewar system at Komagoe

**The Postwar Years - Matsumae purged from public office:**

Because of his important governmental position during the war years, Dr. Matsumae was purged from public office in 1946 by the order of the General Headquarters of the Allied Powers (GHQ). He could no longer



Dr. Matsumae walking through the pine trees at Miho, where the university was founded, with his students, pupils, and kindergarten children

participate in the management of his recently founded Tokai University and the university, having lost its central support, was in danger of being closed. The prevailing conditions of postwar Japan meant the loss of prewar values, social and economic confusion, and a lack of inspiration and ideas, all of which further jeopardized Tokai University's future.

However, Tokai had many supporters. Because of their hard work to rebuild the institution, the university survived the crisis. Immediately after the purge directive was lifted in 1950, Dr. Matsumae returned to the university and continued to build what is today known as the Tokai University Educational System.

**Hitch your wagon to a star! Dr. Matsumae's legacy to his students:**

Dr. Matsumae hoped that his educational system would cultivate citizens who can undertake the task of building a future of peace and happiness for humankind. In addition, Matsumae imparts these words to all youth: "Aim your hopes towards the stars in your early days." Here, "hopes" refers to high ideals and ambition. These words embody the same sentiment that Dr. Clark, Kanzo Uchimura's mentor, expresses in his words, 'Boys, be ambitious,' a message that truly transcends time.

Society today is faced with rapid changes and there are many challenges that lie ahead in the future of humankind. It is for this very reason that we must face the future with those high ideals that Dr. Matsumae has set forth for us all.

**Kanzo Uchimura (1861 - 1930)**

Kanzo Uchimura advocated a non-church, Biblebased independent Christianity and led a Bible study group that Shigeyoshi Matsumae attended every Sunday around 1925. This experience had a profound effect on his spiritual beliefs and overall world view



Courtesy of Imai-kan Kyoyukai

**N.F.S. Grundtvig (1783 - 1872)**

N.F.S. Grundtvig was a Christian thinker, poet and educator. Highly critical of the state churches and schools in 19th century Denmark, Grundtvig advocated folkehøjskole (folk high schools). His way of thinking had an enormous influence on Dr. Matsumae's educational philosophy.



Courtesy of Denmark Museum of History

**School name**

"Tokai" refers to the Pacific Ocean — the world's largest ocean which lies to the east of Asia. It is hoped that students will possess minds as wide-open as this ocean, receptive to new possibilities and broad viewpoints

**School emblem**

The school emblem consists of waves and a pair of wings, expressing the vastness of the ocean and a seagull soaring gracefully with wings outstretched.



**School flag**

Dr. Matsumae chose the white cross, a symbol of love and justice, as the main visual on the school flag. This is a reflection of Kanzo Uchimura's influence on Dr. Matsumae. "The horizontal line represents love and the vertical line, justice. Truth exists at the point where the two lines intersect," Dr. Matsumae explains. TES uses seven flags of different colors — red, orange, yellow, green, blue, indigo and purple — that correspond to the kindergarten, primary school, junior high school, senior high school, junior college, university and graduate school respectively. These are the seven colors of the rainbow that together make up the nurturing white light of the sun. This symbolizes the hope of the TES schools to foster rich lives through educational unity.



# The Tokai Centenary Plan

With a view to our centenary, we have adopted a new message: Think Ahead, Act for Humanity

## The Tokai Centenary Plan ~Voyage to 2042~

The Tokai Centenary Plan is Tokai University Educational System (TES)'s comprehensive strategy that is designed to ensure that in 2042, our centenary, we remain an integral player in building a harmonious society through the development of personnel. We do so by staying true to the educational ideals that have remained constant since our founding.

### TES Ideal Vision

Our Vision for the Centenary

The TES Ideal Vision expresses the common values and guiding principles of “challenge,” “friendship,” “justice,” “love,” and “cutting edge” that constitute the spirit underlying our institution’s history and tradition. These have been combined with our focus on the “world” and “peace” since our founding.

### Education

Educating global citizens who will build a brighter future

### Research

Promoting research that contributes to the attainment of lasting global peace and human welfare

### Engagement

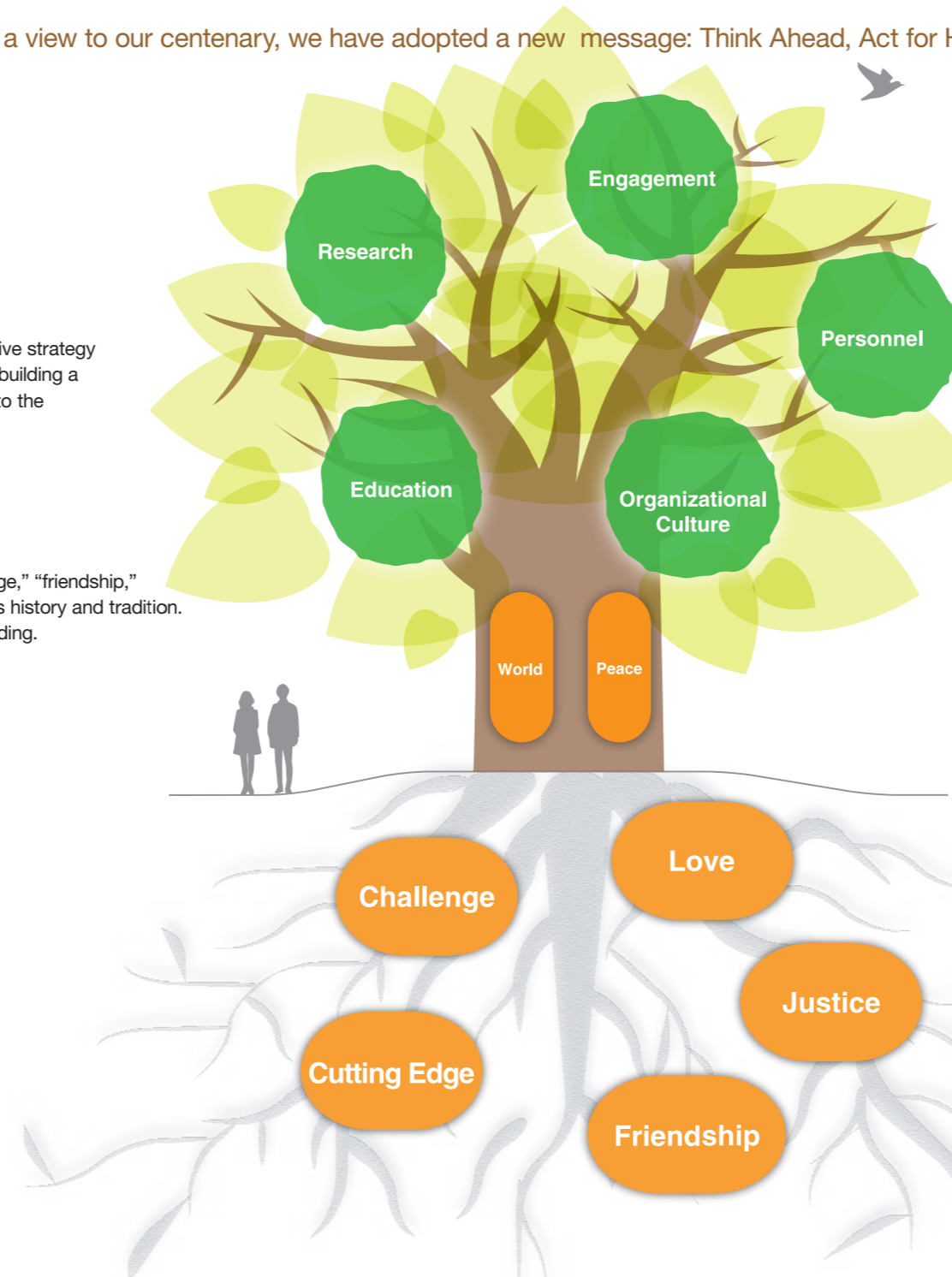
Giving back by sharing our research and educational achievements with communities

### Personnel

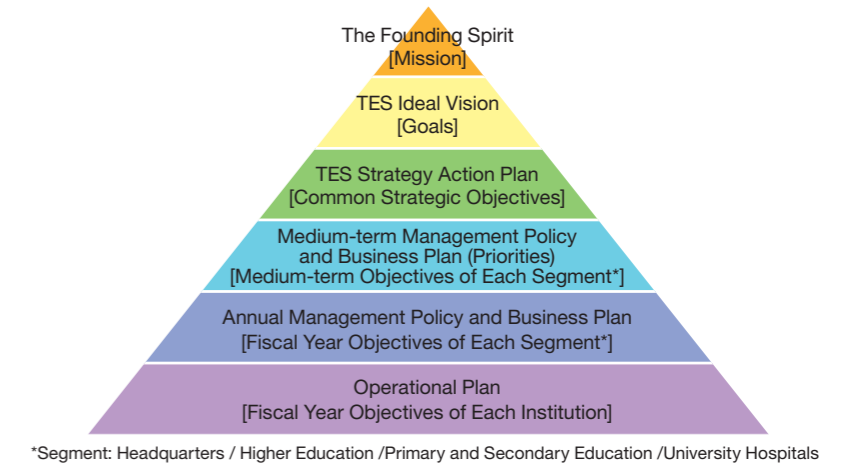
Working together as a diverse community through dialogue and collaboration to tackle difficult challenges

### Organizational Culture

Engaging with all people who are a part of TES with a warm and considerate heart



## The Tokai Centenary Plan Stages



## Medium-Term and Long-Term Objectives to Realize the Ideal Vision of TES

TES strategy Action Plan (Common Strategic Objectives) is a plan which covers four areas: Fundamental Policy on Education and Research, Finance, Human Resources and Facilities.

### TES Strategy Action Plan

#### Fundamental Policy on Education and Research

1. Promoting a consistent and balanced arts and sciences education.
2. Embracing the diversity of personalities, cultures, and values to provide an education that deepens mutual understanding.
3. Building a research system that can create new social values.

#### Finance

1. Establishing and maintaining a stable financial base early on.
2. Planning and implementing a funding scheme for the enhancement of facilities.

#### Human Resources

1. Developing a human resource management system that maximizes the strengths of our employees.
2. Developing a salary and benefits program that corresponds to employees’ tasks, abilities and performance, and enables the attainment of a work-life balance.
3. Creating a training system to develop a wide range of abilities.

#### Facilities

1. Promoting an efficient and effective facilities development plan to enable the best use of facilities.
2. Developing a central information system for institutional management.

# History

## 1940

- 1942.12 Tokai University Educational System (TES) is founded in Shimizu-shi (currently Shimizu-ku, Shizuoka-shi), Shizuoka.
1943. 4 Aerial Science College opens in Miho, Shimizu-shi (currently Miho, Shimizu-ku), Shizuoka.
- 1943.12 Aerial Science College relocates to Komagoe, Shimizu-shi (currently Komagoe, Shimizu-ku), Shizuoka.
1944. 4 Radio Wave Science College and Radio Wave College open in Egota, Nakano-ku, Tokyo.  
College of Telecommunications Technology opens Telecommunications Engineering School in Egota, Nakano-ku, Tokyo.
1944. 9 TES consolidates with College of Telecommunications Technology (a foundation established in October 1937 having a Telecommunications College in Takanawa, Shiba-ku, Tokyo).
1945. 8 Aerial Science College and Radio Wave Science College are consolidated into Tokai College.  
The main campus opens in Komagoe, Shimizu-shi, Shizuoka while the branch campus opens in Nukui, Fuchu-machi, Kitatama-gun (currently Koganei, Fuchu-shi), Tokyo.  
Telecommunications Engineering School and Radio Wave College are consolidated into Tokai School of Technology (renamed Tokai High School in April 1948, Tokai Radio Wave Senior High School in April 1952, Tokai University Takanawadai Senior High School in April 1968).
1945. 9 Telecommunications College is renamed Tokai School of Science and Technology (renamed Tokai Senior Communications College in March 1947 and closed in March 1965).
- 1945.10 Tokai College is renamed Tokai College of Science (until March 1950).
1946. 5 Tokai University is accredited under the old educational system.  
The Preparatory Course and School of Economics and Humanities open in Komagoe, Shimizu-shi, Shizuoka, and the School of Science and Engineering opens in Miho, Shimizu-shi, Shizuoka.

## 1950

1950. 4 Tokai University opens as an accredited university under the new educational system.  
School of Engineering (in Miho, Shimizu-shi, Shizuoka), and School of Letters (in Komagoe, Shimizu-shi, Shizuoka), open.
1951. 3 Tokai University becomes Tokai University Educational System under the Private School Enforcement Act.
1955. 1 Yoyogi Campus opens in Tomigaya-cho, Yoyogi, Shibuya-ku (currently Tomigaya, Shibuya-ku), Tokyo.  
TES Headquarters and Tokai University School of Engineering relocate to Yoyogi Campus.
- 1958.12 The VHF (FM) experimental station starts broadcasting.

## 1960

1960. 5 The VHF experimental station FM-Tokai starts broadcasting (renamed Tokyo FM in April 1970).
1962. 4 Shimizu Campus opens in Orido, Shimizu-shi (currently Orido, Shimizu-ku), Shizuoka.
1962. 5 The research and training vessel Tokai Daigaku Maru (191 tons) goes into service.
1963. 4 Shonan Campus opens in Kitakaname, Hiratsuka-shi, Kanagawa.
1964. 4 Japanese Language Course for International Students opens at Shonan Campus.
1967. 4 Sapporo Campus opens in Minamisawa, Minami-ku, Sapporo-shi, Hokkaido.
1968. 3 Overseas Education Cruise starts.

## 1970

1970. 9 Tokai University European Center opens in the suburbs of Copenhagen, Denmark.
1973. 4 Numazu Campus opens in Nishino, Numazu-shi, Shizuoka.  
Aso Campus opens in Kawayou, Chouyou-mura (currently Kawayou, Minamiaso-mura), Aso-gun, Kumamoto.  
Kyushu Tokai University opens at Aso Campus (until March 2008).
1974. 3 TES Research and Information Center opens at Yoyogi Campus (renamed Tokai University Research and Information Center in April 2008).
1974. 4 Isehara Campus opens in Shimokasuya, Isehara-shi, Kanagawa.
1975. 2 Tokai University Hospital opens at Isehara Campus.
1975. 4 Kumamoto Campus opens in Ooe-machi (currently Toroku, Higashi-ku), Kumamoto-shi, Kumamoto.
1977. 4 Asahikawa Campus opens in Kamui, Asahikawa-shi, Hokkaido.  
Hokkaido Tokai University opens at Asahikawa Campus (until March 2008).

## 1980

1982. 1 Tokai University Bosei Gakujuku opens in Nishikubo, Musashino-shi, Tokyo.
- 1983.12 Tokai University Tokyo Hospital opens in Yoyogi, Shibuya-ku, Tokyo.
1984. 4 Tokai University Oiso Hospital opens in Oiso-machi, Naka-gun, Kanagawa.
- 1984.11 Tokai University Matsumae Budo Center opens in Vienna, Austria (transferred the ownership to Vienna City and renamed Vienna Matsumae Budo Center in October 2007).
- 1986.11 TES Space Information Center opens in Mashiki-machi, Kamimashiki-gun, Kumamoto.
1988. 4 Tokai University Boarding School in Denmark opens in Praesto, Denmark (closed in February 2008).

## 1990

1991. 2 Tokai University Pacific Center opens in Honolulu, Hawaii, USA.
- 1992.10 Tokai International College (TIC) opens in Honolulu, Hawaii, USA (renamed Hawaii Tokai International College (HTIC) in April 1996).
- 1993.10 The research and training vessel "Bosei Maru" (2,174 tons) goes into service.
1996. 6 "Bosei Maru" embarks on an around-the-world educational cruise (until October).

## 2000

2002. 3 Tokai University Hachioji Hospital opens in Ishikawa-machi, Hachioji-shi, Tokyo.
- 2003.11 Tokai University Asian Office opens in Bangkok, Thailand (renamed Tokai University Bangkok Office in April 2011, Tokai University ASEAN Office in October 2013).
2006. 4 Tokai University Seoul Office opens in Seoul, Republic of Korea.  
Tokai University Student Project Center opens at Shonan Campus.
- 2007.11 Tokai University Vienna Office opens in Vienna, Austria.
2008. 4 Tokai University, Kyushu Tokai University, and Hokkaido Tokai University are consolidated and reorganized into Tokai University.  
Takanawa Campus opens in Takanawa, Minato-ku, Tokyo.

## 2010

2015. 4 Tokai University Pacific Center and Hawaii Tokai International College (HTIC) relocate to Kapolei (in the University of Hawaii-West Oahu Campus).
2018. 9 Tokai University Russia Office (Vladivostok) opens in Vladivostok, Russia.

# Quick Facts



## Students

### Tokai University

Category	Full-time Students
Undergraduate Schools	27,638
Graduate Schools	898
<b>Total</b>	<b>28,536</b>

### International Students

Category	International Students
Undergraduate Student (Inc. Research student)	912
Graduate Student	109
Japanese Language Course (JL)	70
Special Japanese Language Program (JS)	42
<b>Total</b>	<b>1,133</b>

### International Students by Country

Country	Students	Country	Students	Country	Students	Country	Students
China (mainland)	584	Afghanistan	6	Costa Rica	2	UK	1
South Korea	121	Cambodia	5	Egypt	2	Brazil	1
Thailand	73	India	5	Fiji	2	Bulgaria	1
Saudi Arabia	68	Iran	5	France	2	Burundi	1
Malaysia	43	Spain	5	Germany	2	Nepal	1
UAE	37	USA	4	Israel	2	Pakistan	1
Taiwan	27	Bangladesh	4	Italy	2	Peru	1
Mongolia	19	Sri Lanka	4	Kuwait	2	Philippines	1
Indonesia	18	Finland	3	New Zealand	2	Rwanda	1
Russia	16	Kazakhstan	3	Sweden	2	Senegal	1
Vietnam	14	Myanmar	3	Syria	2	<b>Total</b>	<b>1,133</b>
Qatar	13	Nigeria	3	Uganda	2		
Turkmenistan	11	Norway	3	Venezuela	2		

## Undergraduate Schools

School	Student Total	(International Students)
Letters	2,794	(45)
Cultural and Social Studies	918	(34)
Political Science and Economics	1,923	(59)
Law	1,259	(7)
Humanities and Culture	1,406	(55)
Physical Education	1,887	(13)
Health Studies	408	(7)
Science	1,278	(28)
Information Science and Technology	841	(63)
Engineering	5,819	(391)

## Junior Colleges

College	Students
Tokai University Junior College	384
Tokai University Junior College of Nursing and Medical Technology	257
Hawaii Tokai International College	152

School	Student Total	(International Students)
Tourism	860	(32)
Information and Telecommunication Engineering	1,337	(73)
Marine Science and Technology	2,117	(37)
Medicine	863	(1)
Health Sciences	335	(1)
Business Administration	868	(18)
Industrial and Welfare Engineering	365	(2)
Agriculture	842	(5)
International Cultural Relations	956	(4)
Biological Sciences	562	(7)

## Affiliated Schools

School	Students
High Schools	16,795
Junior High Schools	2,082
Elementary Schools	264
Kindergartens	1,037

## Staff

### Tokai University

Academic Staff	Total	(Female)
Professor	638	(79)
Associate Professor	376	(90)
Junior Associate Professor	323	(79)
Assistant Professor	300	(91)
<b>Total</b>	<b>1,637</b>	<b>(339)</b>

Non-academic Staff	Total	(Female)
Campuses	793	(394)
University Hospitals	2,624	(1994)

### Junior Colleges

College	Academic Staff	Non-academic Staff
Junior College	22	10
Junior College of Nursing and Medical Technology	26	7

### Affiliated Schools

School	Academic Staff	Non-academic Staff
High Schools	717	85
Junior High Schools	131	6
Elementary School	22	2
Kindergartens	65	6

As of May, 2019